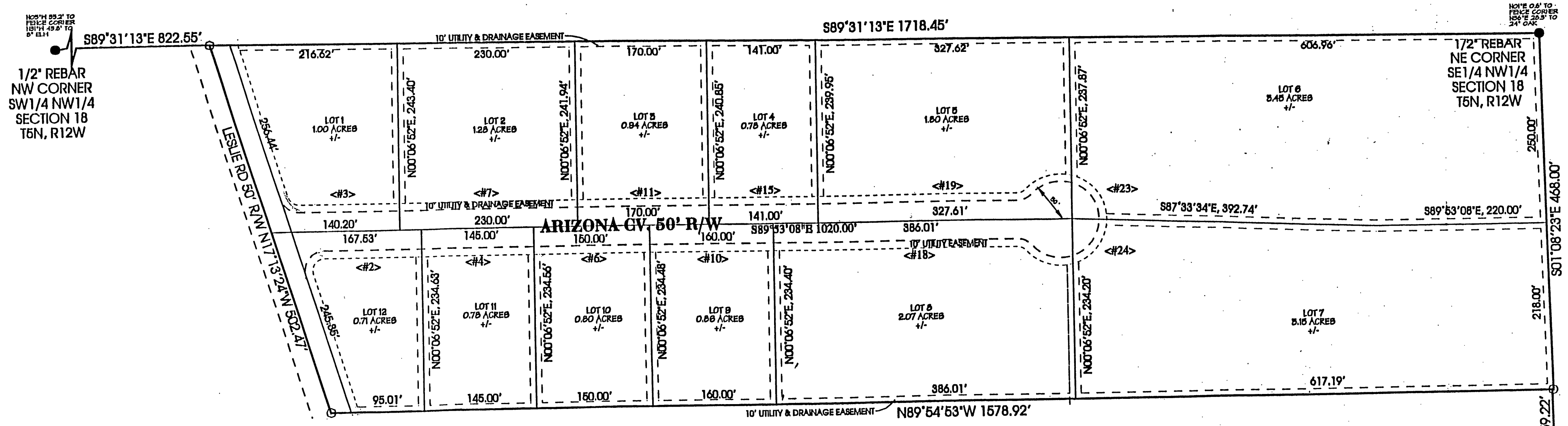


SAGE MEADOWS SUBDIVISION
FAULKNER COUNTY, ARKASAS



FILED FOR RECORD
Date 5-23-05
at 12:00 o'clock P. M.
SHARON RIMMER, CLERK
By [Signature] D.C.

LEGEND
● FOUND MONUMENT (AS NOTED)
○ SET 1/2" REBAR

NOTE:
1/2" REBAR W/ ID CAPS ARE SET AT ALL LOT CORNERS.
ALL ROUNDED CORNERS ARE 25' RADII UNLESS OTHERWISE NOTED.
ALL EASEMENTS BETWEEN LOTS ARE 7.5' EACH SIDE OF LOT LINES

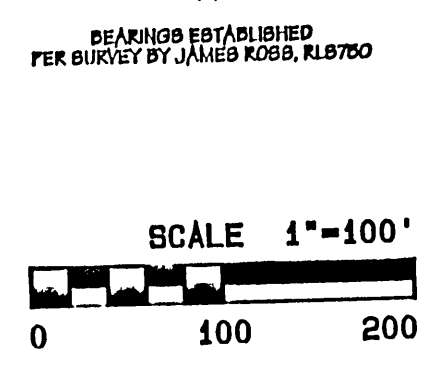
CERTIFICATE OF OWNER
I THE UNDERSIGNED, OWNER OF THE REAL ESTATE SHOWN AND DESCRIBED HEREIN DO HEREBY CERTIFY THAT I HAVE LAID OFF, PLATTED AND SUBDIVIDED, AND DO HEREBY LAYOFF, PLAT AND SUBDIVIDE THE REAL ESTATE IN ACCORDANCE WITH THIS PLAT, AND DO HEREBY DEDICATE TO THE USE OF THE PUBLIC, THE EASEMENTS AND EMBLEMENTS AS SHOWN ON SAID PLAT.
DATE OF EXECUTION 5-23-05
[Signature]
KEVIN WATSON
700 PADGETT RD
CONWAY AR 72034

CERTIFICATE OF SURVEY ACCURACY
I ROBERT D. FRENCH, HEREBY CERTIFY THAT THIS PLAT CORRECTLY REPRESENTS A BOUNDARY SURVEY MADE BY ME AND BOUNDARY MARKERS AND LOT CORNERS SHOWN HEREON ACTUALLY EXIST AND THEIR LOCATION, TYPE AND MATERIAL ARE CORRECTLY SHOWN AND ALL MINIMUM REQUIREMENTS OF THE ARKANSAS MINIMUM STANDARDS FOR LAND SURVEYORS HAVE BEEN MET.
DATE OF EXECUTION 5-23-05
[Signature]
ROBERT D. FRENCH, ARKANSAS PROFESSIONAL LAND SURVEYOR NO. 1363

CERTIFICATE OF RECORDING
THIS DOCUMENT FILED FOR RECORD 5/23/05, 2006 IN PLAT BOOK No. 14
PAGE 13
[Signature]
SHARON RIMMER, CIRCUIT CLERK, FAULKNER COUNTY, ARKANSAS



LEGAL DESCRIPTION:
PART OF THE SE1/4 NW1/4 AND PART OF THE SW1/4 NW1/4, SECTION 18, TOWNSHIP 5 NORTH, RANGE 12 WEST, FAULKNER COUNTY, ARKANSAS, MORE PARTICULARLY DESCRIBED AS FOLLOWS: BEGINNING AT THE NORTHEAST CORNER OF SAID SE1/4 NW1/4; RUN THENCE S01°08'23"E, ALONG THE EAST LINE OF SAID SE1/4 NW1/4 A DISTANCE OF 468.00 FEET; THENCE N89°54'53"W A DISTANCE OF 1578.92 FEET; THENCE N17°13'24"W, A DISTANCE OF 602.41 FEET TO A POINT ON THE NORTH LINE OF SAID SW1/4 NW1/4; THENCE S89°31'13"E, A DISTANCE OF 1718.45 FEET TO THE POINT OF BEGINNING CONTAINING 17.82 ACRES, MORE OR LESS, AND SUBJECT TO ALL ROADWAYS AND/OR EASEMENTS, PUBLIC OR PRIVATE, WHICH MIGHT BE LOCATED THEREON.



SAGE MEADOWS SUBDIVISION	
FAULKNER COUNTY, ARKANSAS	
LOT PLAN	
CENTRAL ARKANSAS PROFESSIONAL SURVEYING	1
SCALE	1"=100'
DATE	05/04/05